

QGIS e ARPAL

Monica Lazzari – Cinzia Picetti

QGIS day 6 dicembre 2019

Palazzo Strozzi Sacratì P.za Duomo Firenze

RILIEVI LASER SCANNER

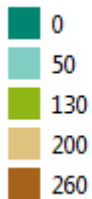


Laser Scanner RIEGL LMS-Z420i, dotato di fotocamera integrata ad alta risoluzione,

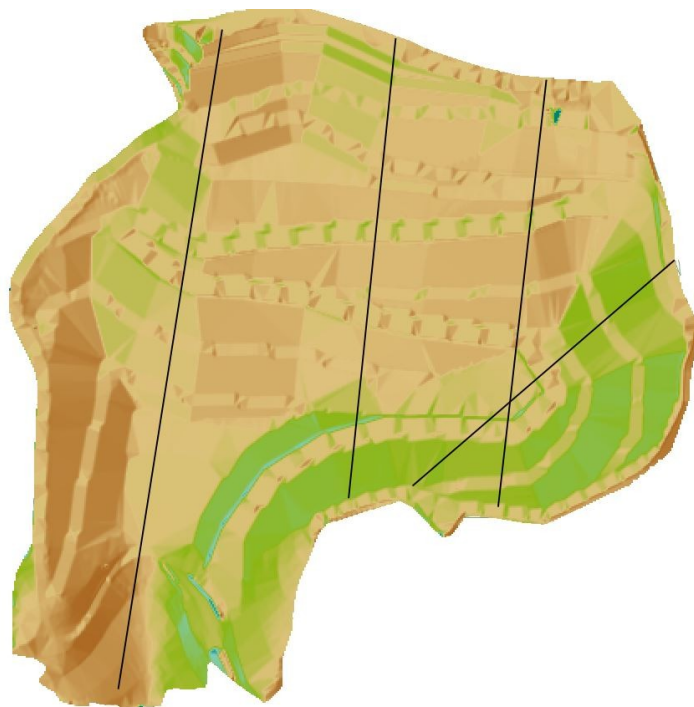
- Measurement range 2 - 1000 m
- Accuracy 10 mm
- Laser class 1
- Minimum angle stepwidth 0.004°
- Inclination Sensors (integrated)



DTM RILIEVO



DTM PROGETTO



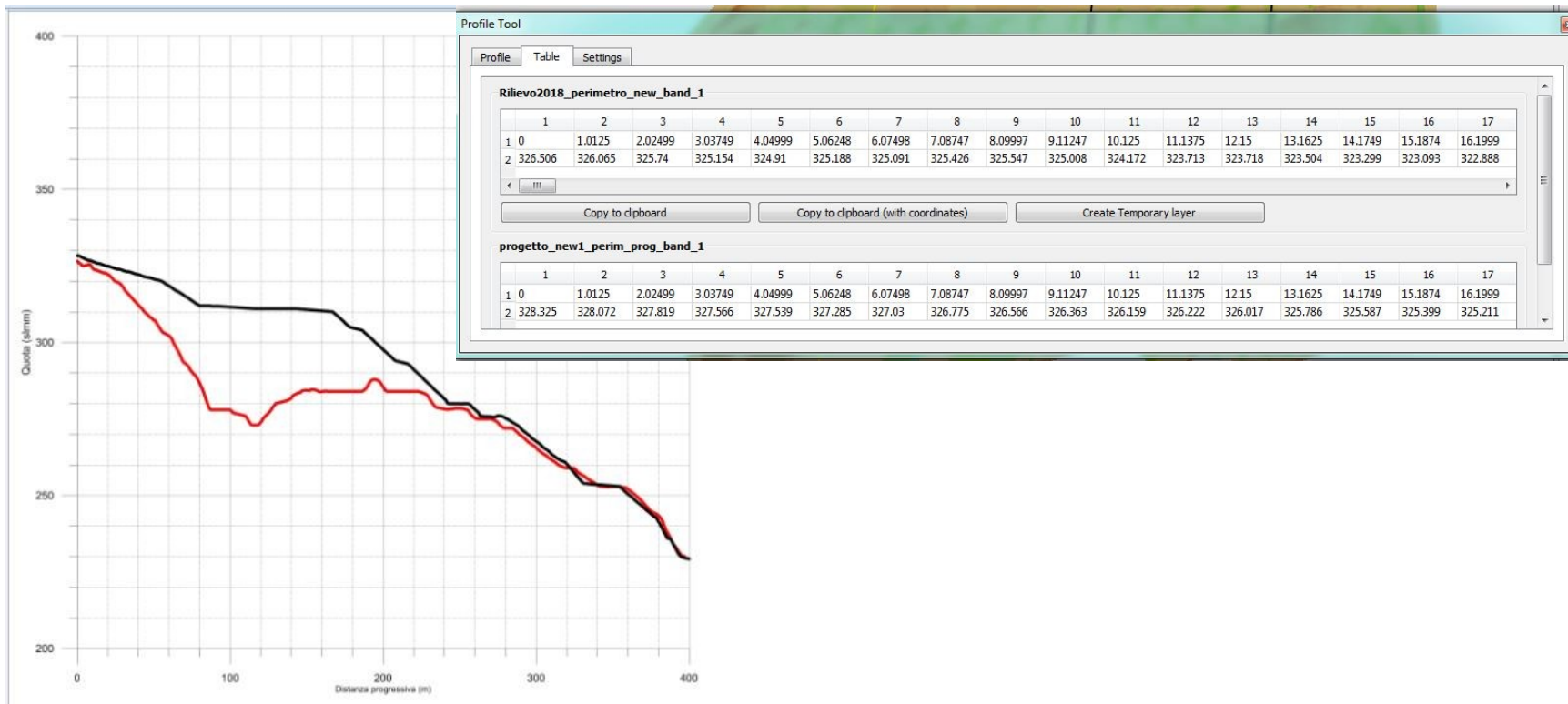
PLUGIN - TERRAIN PROFILE

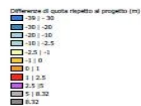
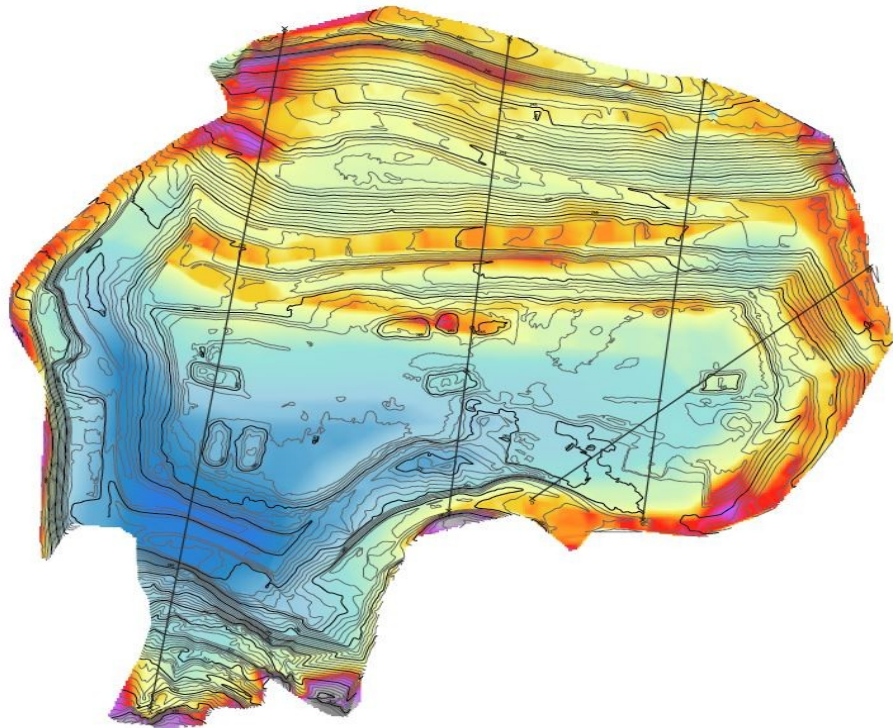


Terrain profile



SEZIONE

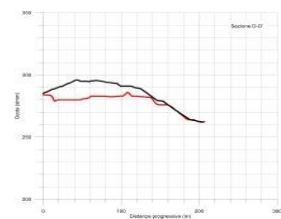
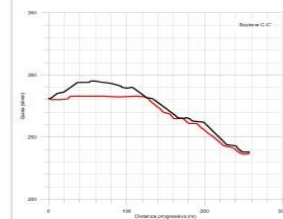
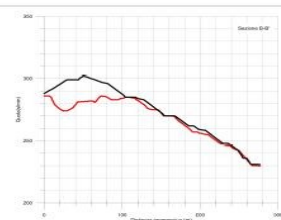
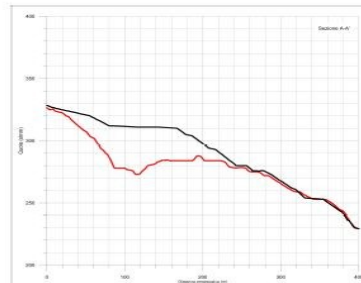




— Sezione (Rilievo) (mg. 3/10)

— Sezione (Rilievo) (mg. 3/10)

— Sezione (Rilievo)



Esagono in vertice 1:1

— Progetto

— Rilievo



DISCARICA ECOSAVONA
 Verde Ligurie (Dn)

Differenza di quota tra il rilievo topografico effettuato in data 13/02/2010 e la planimetria di progetto del 21/02/2010 a Sectioni topografiche

FASCIA	DATA	SCALE
A	14/02/2010	1:200

File: E:\00000000\Arpal_Sm1_p0000.dwg

Disegnato: Marco Lazzari - C.T. Carlo Pizzari

Verificato: Francesco Di Maggio - Marco Caracciolo

Grazie
